

NEW STRUCTURE - 2013

DETAILS

Project

Pascoe Parking Garage
Escanaba, MI

Area

Parking Garage 4,277 sq.ft.

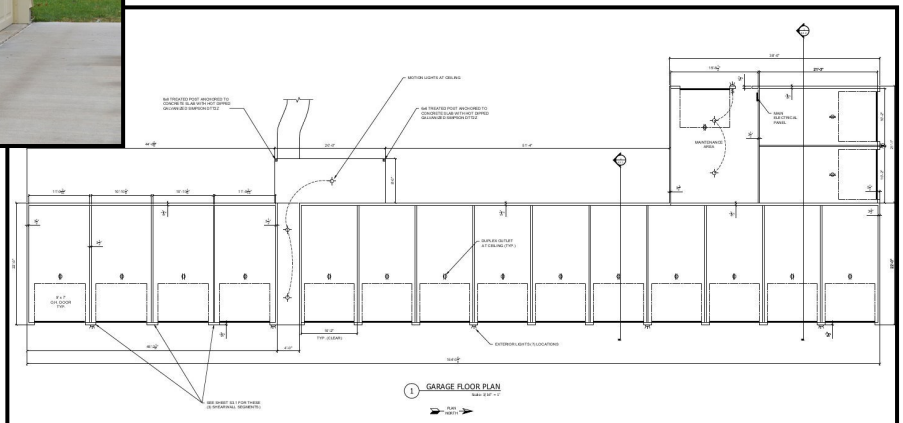
This is a 17 bay tenant parking garage is located in downtown Escanaba and situated on an alley way. Maximum parking capacity in the limited space were challenges in this design. The garage features 16 tenant parking stalls, a maintenance parking stall with a service door and an enclosed area for garbage containers.



Parking Garage alley view.



Parking Garage service door.



Parking Garage floor plan.