

DETAILS

Project

Great Lakes Sports & Recreation
Club
Escanaba, Michigan

Area

Existing:

Club Area 4,522 sq. ft.
Range 1,946 sq. ft.

New:

Range & Restrooms 2,880 sq. ft.

Remodeled:

Range 1,189 sq. ft.

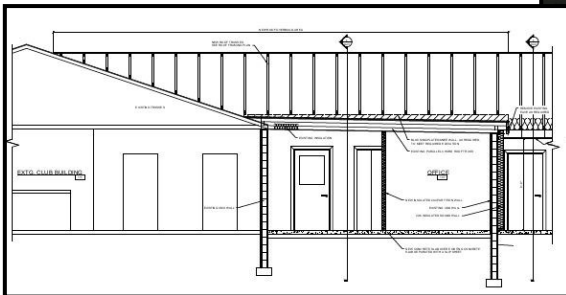
Total Building Area: 9,348 sq. ft.

ADDITION & REMODEL - 2014

The Great Lakes Sports & Recreation Club was in need of more indoor range space and accessible rest rooms. The board made the decision to pursue an archery range addition and contacted DDGi. DDGi worked with the club and designed a 14 lane 20 yard range and incorporated rest rooms in the addition.



Great Lakes Sports Club addition.



Section view.



Great Lakes Sports Club addition.