

## DETAILS

### Project

Movalson Office Building  
Gladstone, Michigan

### Area

Basement	1,119 sq.ft.
First Flr.	1,189 sq.ft.
Deck / Ramp	771 sq.ft.
Total	3,079 sq.ft.

### Project Highlights

Fully functioning home style layout including a full size kitchen, bathroom and laundry.  
Full basement for storage.  
ADA compliant including decks.

## NEW BUILDING - 2013

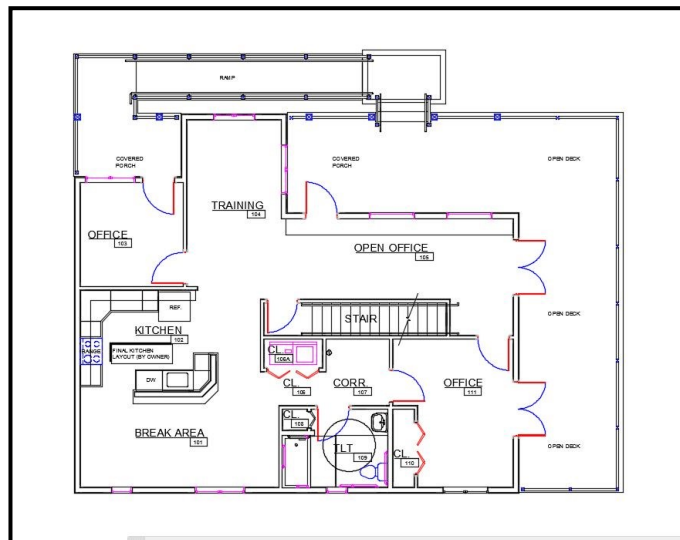
This office building was constructed on a site using an existing foundation.

The facility was designed replicating a residential layout and contains a fully functioning kitchen, bath and laundry, as well as being ADA compliant.

The project included complete building design services including architectural, civil, structural, mechanical, electrical and plumbing.



Movalson Office Building



Main Level Floor Plan