

REMODEL - 2013

DETAILS

Project

Peninsula Federal Credit Union
Escanaba, MI

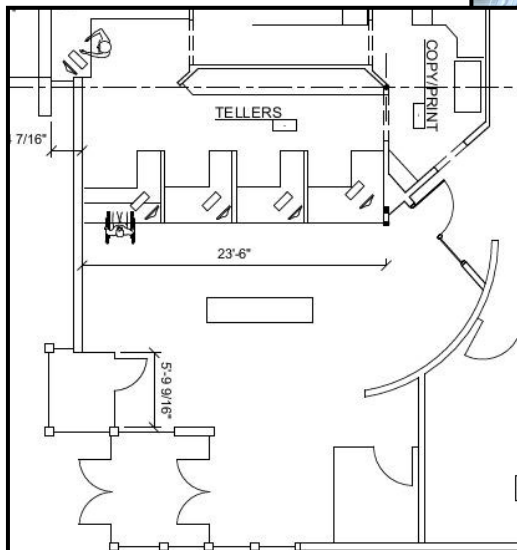
Area

Existing Building 5,725 sq. ft.
Remodeled Space 448 sq. ft.

The Peninsula Federal Credit Union branch on County Road 426 was in need of more working space as well as an updated, fresh new look. This remodel focused on the functionality of the space while keeping it simple and clean. By pushing the reduced number of teller windows out farther into the lobby, we were able to give the employees more work space and the customers they serve easy access to the larger modern teller windows.



Lobby prior to remodel



New floor plan for lobby remodel



Lobby after remodel